

# ASX ANNOUNCEMENT

1 March 2010

Marmota Energy Limited  
ACN: 119 270 816  
ASX: MEU

Exploration Office:  
Unit I, 5 Butler Blvd  
Burbridge Business Park, SA 5950

P: +61 8 8375 4300

F: +61 8 8375 3999

E: [info@marmotaenergy.com.au](mailto:info@marmotaenergy.com.au)

W: [www.marmotaenergy.com.au](http://www.marmotaenergy.com.au)

*The information in this report that relates to Exploration Results, Mineral Resources or Ore Reserves is based on information compiled by Mr D J Calandro, who is a Member of the Australian Institute of Geoscientists. Mr Calandro is employed full time by the Company as Managing Director and, has a minimum of five years relevant experience in the style of mineralisation and type of deposit under consideration and qualifies as a Competent Person as defined in the 2004 edition of the "Australasian Code for Reporting of Exploration Results, Mineral Resources and Ore Reserves". Mr Calandro consents to the inclusion of the information in this report in the form and context in which it appears.*



MARMOTA  
ENERGY LIMITED

A.B.N. 38 119 270 816

## MAIDEN DRILLING LAUNCHED AT MELTON COPPER-GOLD PROJECT, YORKE PENINSULA

- Marmota has commenced maiden drill testing of three major discrete gravity-magnetic targets at the Melton project on the Yorke Peninsula, South Australia.
- Drilling will first test the 'Miranda' target which has displayed the strongest gravity anomaly directly associated with its magnetic anomaly.
- Ten-hole drill program will test the first three of five large-scale magnetic targets at the Melton project.

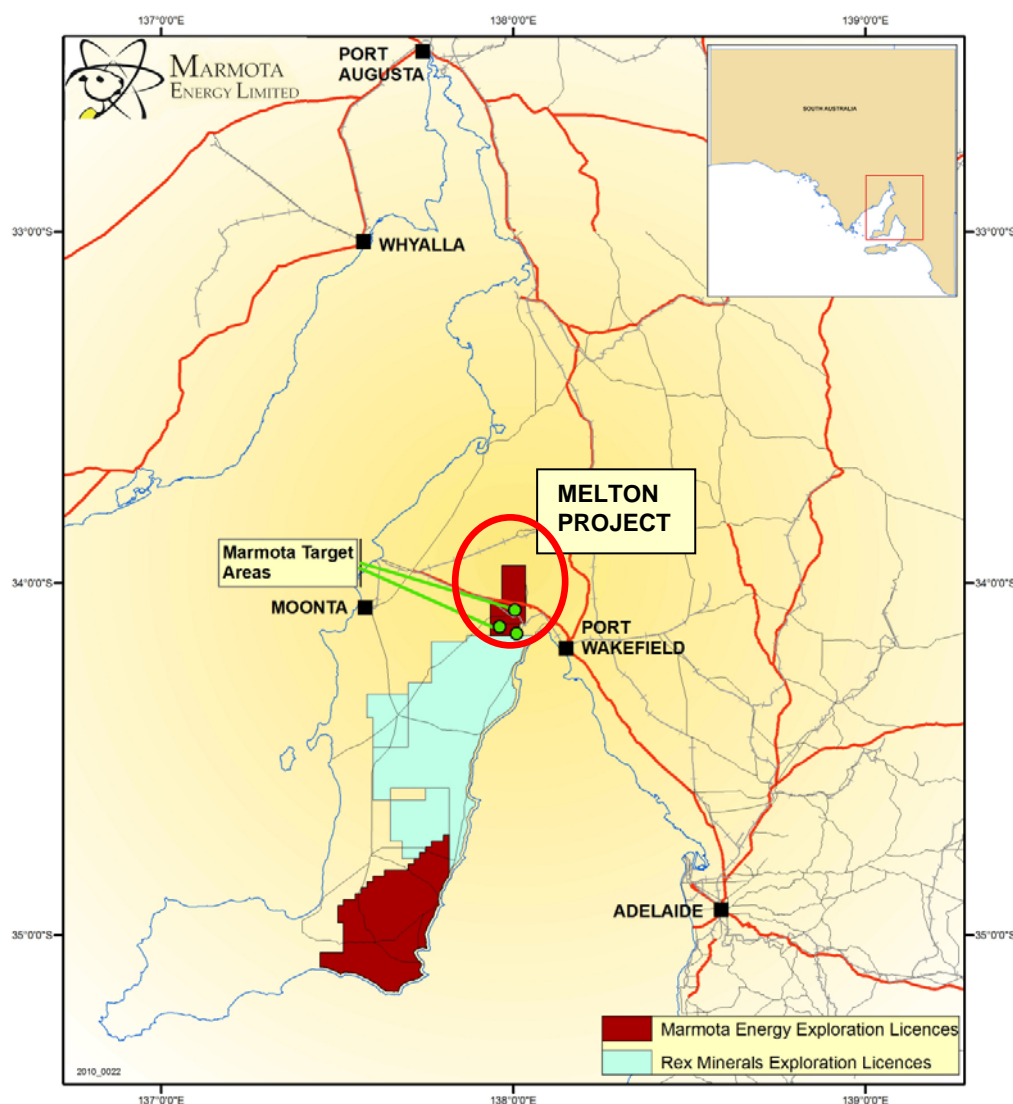


Figure 1. Melton project location diagram

## Melton Copper Gold Project

*Marmota Energy Limited (ASX: MEU) earning 50% under Melton JV Agreement with Monax Mining Limited (ASX: MOX)*

Marmota Energy Limited and its joint venture partner Monax Mining Limited are pleased to announce the commencement of drill testing of targets at the Melton iron-oxide copper gold (IOCG) project in South Australia. The Melton project is located on the northern Yorke Peninsula and contains a 15km section of the highly prospective Pine Point Fault Zone (PPFZ – see Figure 2).

Reprocessing of recently acquired high-resolution aeromagnetic data over the Melton project has outlined five significant magnetic anomalies, of which three in particular have been interpreted to be associated with the PPFZ (Figure 3). The reprocessed data has highlighted the strong magnetic signatures of these anomalies, as well as delineating the prominent north-south trending structural grain together with northeast-southwest and northwest-southeast trending cross-structures.

Drilling at Rex Minerals' neighbouring Hillside discovery has highlighted the correlation between magnetite and copper mineralisation. The reprocessed aeromagnetic data is the first step in developing a drilling program and the addition of detailed gravity data has provided a better understanding of the geology of the region.

Data from the surface gravity survey has been processed and, together with the high-resolution magnetic survey has assisted in targeting interpreted potential mineralised zones within the regional targets. Marmota's drilling program is targeting zones of coincident magnetic and gravity anomalies, as well as gravity only and magnetic only targets. This will provide a clearer understanding of what each feature represents and assist in future drilling programs.

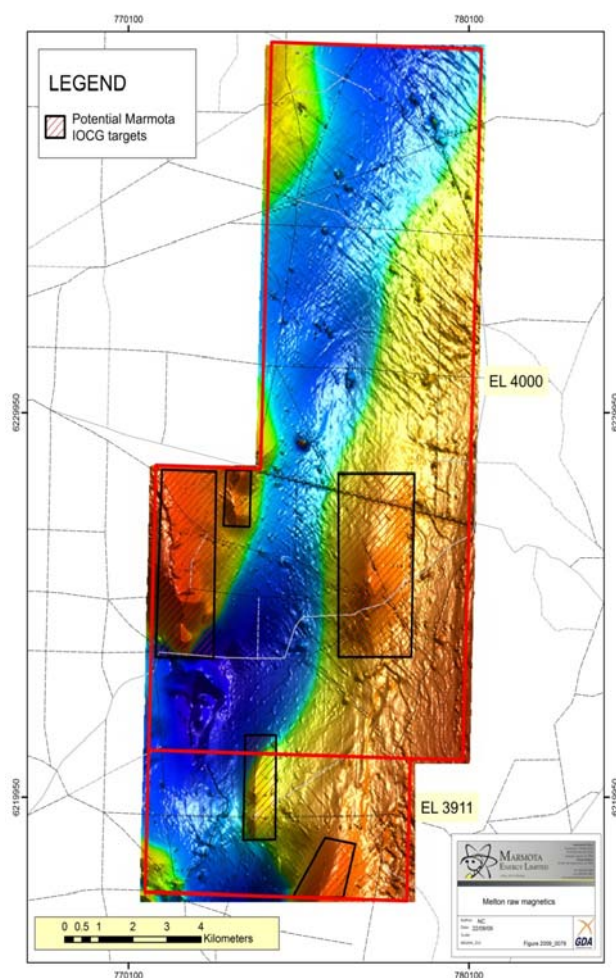


Figure 2. New high resolution magnetic data over the entire Melton project, with potential target zones defined (in red hash).

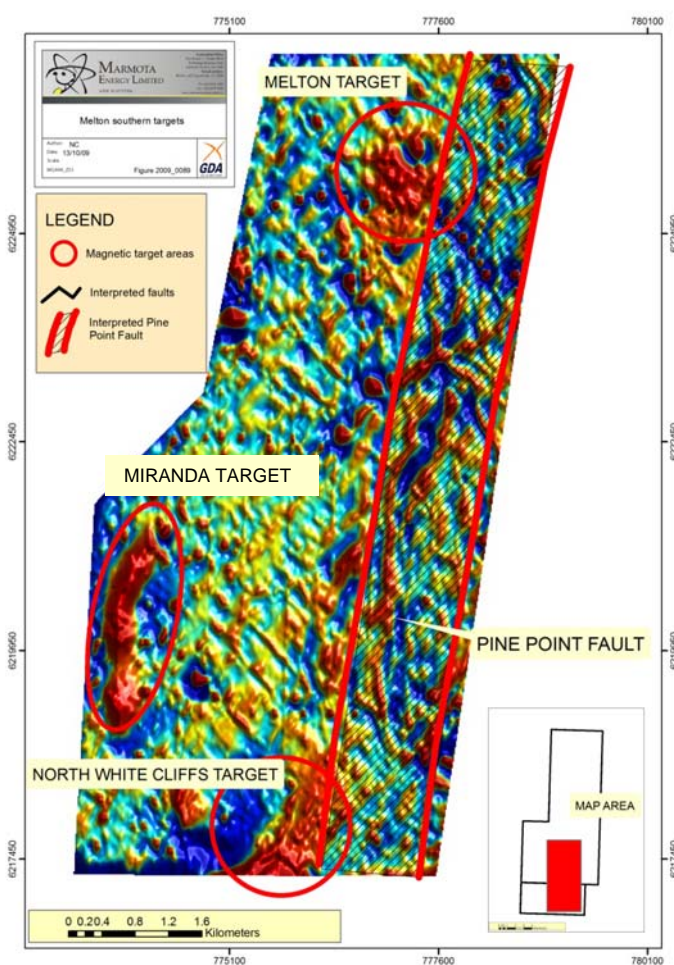


Figure 3. Reprocessed total magnetic intensity, covering the first three of five anomalies on the Melton project.

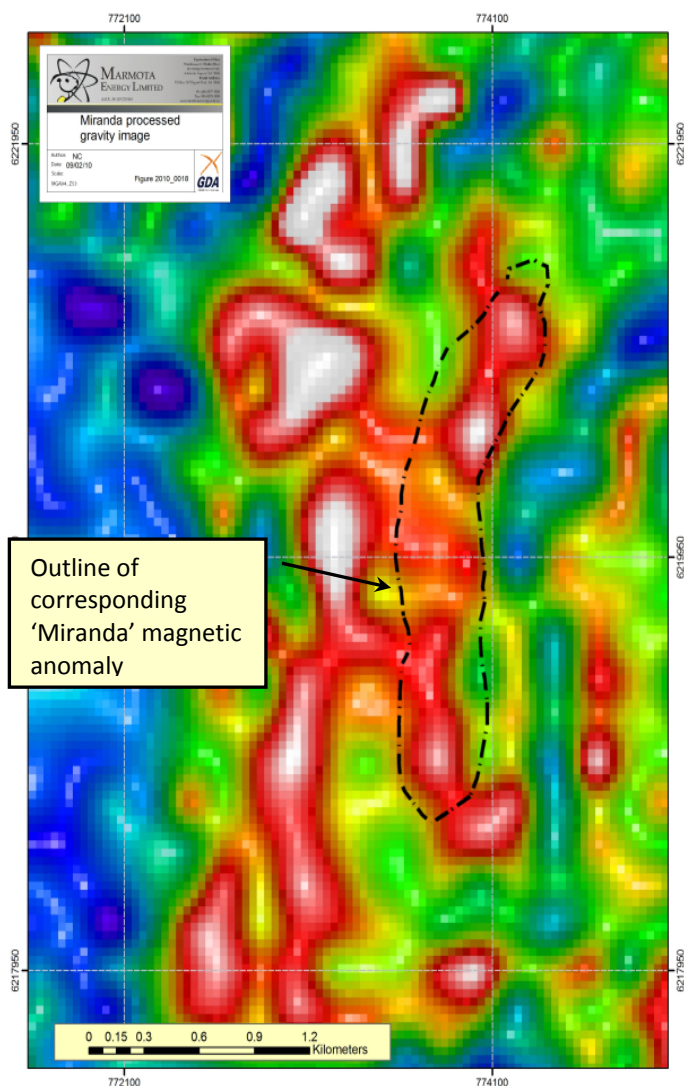


Figure 4. Reprocessed gravity data (red - white: high gravity response), over the Miranda target area with coincident magnetic anomaly location outlined in black dashed line.

Figure 4 shows the newly acquired gravity data over the high-priority Miranda target. The Miranda target represents the strongest gravity anomaly and is up to 4km in length, with the magnetic feature also exhibiting a significant gravity response.

Ten drill holes are planned as part of this maiden program to test the Miranda, Melton and North White Cliffs targets. Phase one drilling is expected to take approximately ten weeks to complete.

Marmota has completed access agreements with landholders within the target areas, paving the way for the timely execution of its exploration programs.

As part of the Company's joint venture with Monax Mining Limited, Marmota recently announced that it had achieved a 25% interest in the Melton project. During this initial drill program, Marmota will achieve its 50% earn-in on the project, and it is anticipated that joint venture partner Monax will elect to preserve its equity interest by contributing to the program.

**Mr Dom Calandro**  
**MANAGING DIRECTOR**

**1 March 2010**