



ASX ANNOUNCEMENT

6 August 2019

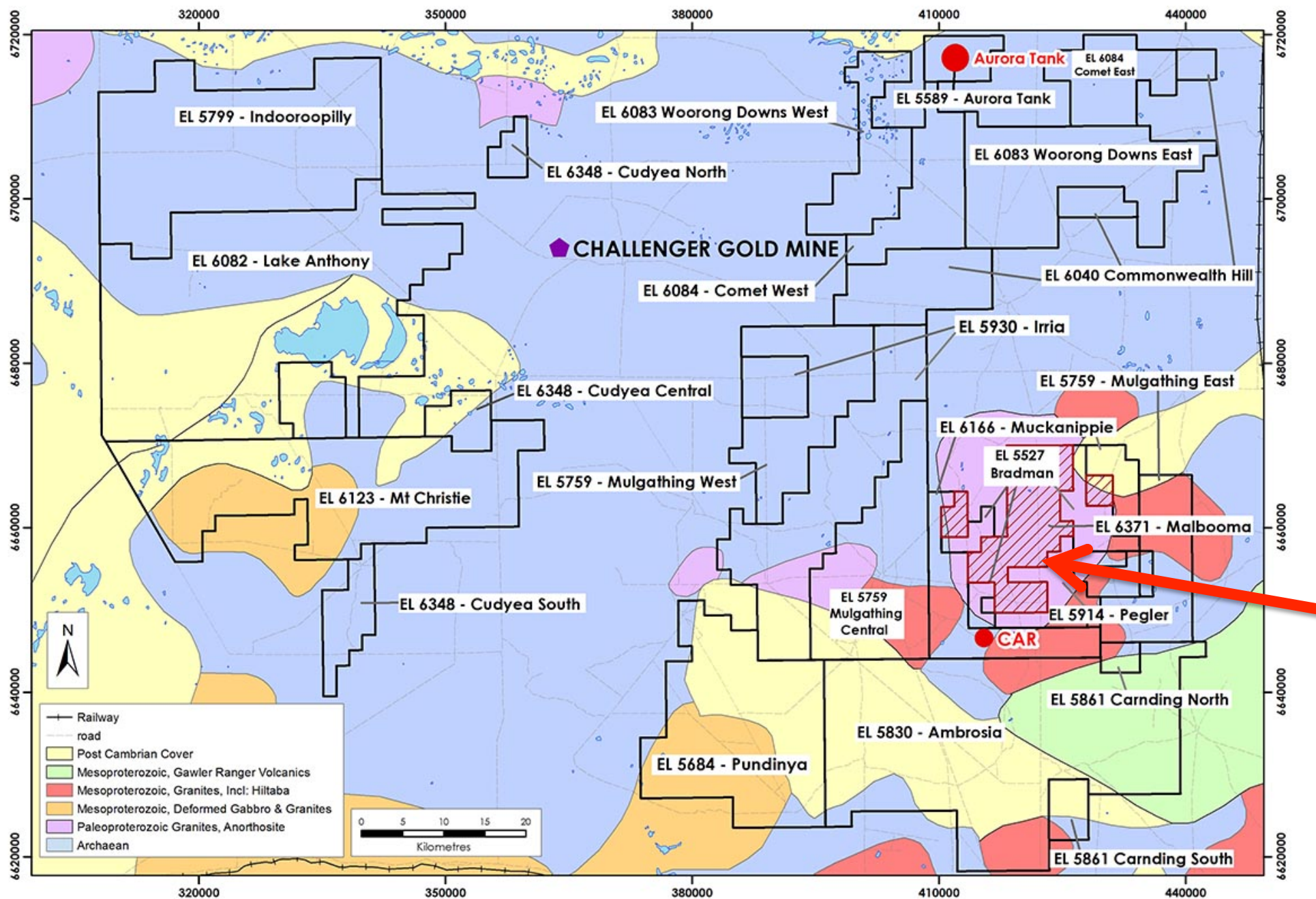
## Gawler Craton Gold: **New Malbooma Tenement**

---

Marmota Limited (ASX: MEU) ("Marmota")

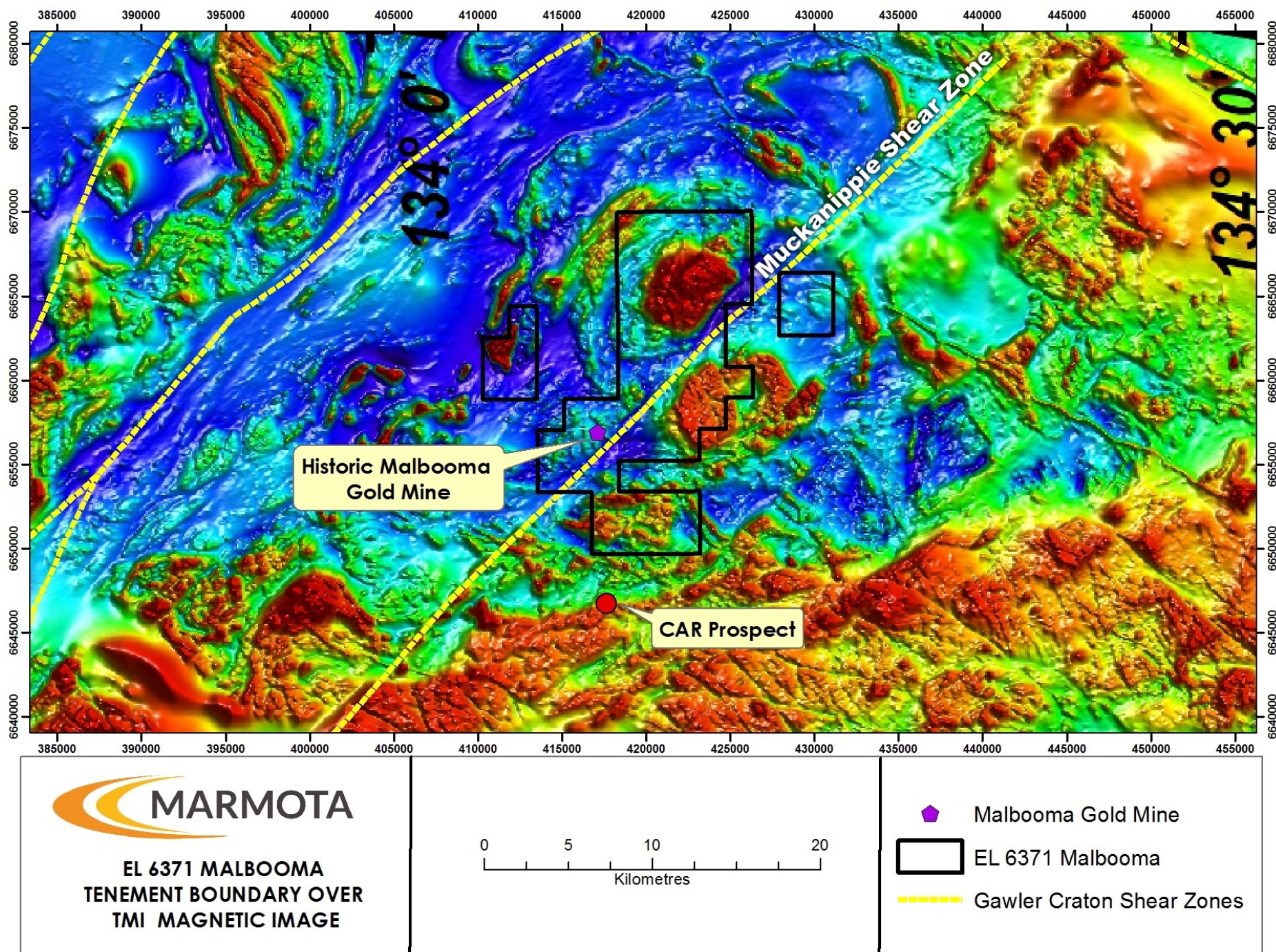
### KEY POINTS

- Marmota (ASX:MEU) has acquired new tenement EL 6371 ('Malbooma') [ see [Fig. 1](#) ].
- The new tenement is located about 45 km south of Marmota's Aurora Tank gold discovery, and immediately north of Marmota's CAR gold prospect.
- Included in the tenement is the historic Malbooma gold mine that reported historic average grades of 7.8 g/t gold, and grades up to 22 g/t gold. The mine opened in 1909 and is hosted by an auriferous quartz reef in the Mesoproterozoic Muckanippie Anorthosite Complex. Mining is believed to have ceased in 1925 with workings up to 15m deep. The number of ounces produced is not recorded.
- The Malbooma tenement covers an area of 178 km<sup>2</sup> and is largely underlain by the Mesoproterozoic Muckanippie Anorthosite Complex which is intruded by Hiltaba granites and has potential to host large IOCG and hydrothermal gold systems.
- The highly prospective Muckanippie Shear Zone passes through the tenement [ see [Fig. 2](#) ].
- The new tenement increases Marmota's holding around the Challenger gold mine to over 6,150 km<sup>2</sup> .



**Figure 1:** Marmota's Gawler Craton Gold Project showing the location of the new Malbooma tenement





**Figure 2:** Malbooma Tenement EL 6371 with Malbooma gold mine, major Muckanippie Shear Zone and CAR Prospect

**For further information, please contact:**

**Marmota Limited**

**Dr Colin Rose**      Executive Chairman  
Email:                [colin@marmota.com.au](mailto:colin@marmota.com.au)

Unit 6  
79-81 Brighton Road  
Glenelg      SA 5045  
ABN: 38 119 270 816  
T:    (08) 8294 0899  
F:    (08) 8376 8633  
[www.marmota.com.au](http://www.marmota.com.au)

---

**About Marmota Limited**

Marmota Limited (ASX: MEU) is a South Australian mining exploration company, focused on gold, copper and uranium. Gold exploration is centred on the Company's dominant tenement holding in the highly prospective and significantly underexplored Gawler Craton, near the Challenger gold mine, in the Woomera Prohibited Defence Area. The Company's copper project is based at the Melton project on the Yorke Peninsula. The Company's uranium project is at Junction Dam adjacent to the Honeymoon mine.

For more information, please visit: [www.marmota.com.au](http://www.marmota.com.au)

**Competent Persons Statement**

Information in this Release relating to Exploration Results is based on information compiled by Dr Kevin Wills, who is a Fellow of the Australasian Institute of Mining and Metallurgy. He has sufficient experience which is relevant to the styles of mineralisation and types of deposits under consideration and to the activities being undertaken to qualify as a Competent Person as defined in the 2012 Edition of the "Australasian Code of Reporting of Exploration Results, Mineral Resources and Ore Reserves." Dr Wills consents to the inclusion in this report of the matters based on this information in the form and context in which it appears.

Where results from previous announcements are quoted, Marmota confirms that it is not aware of any new information or data that materially affects the information included in the relevant market announcement and, in the case of estimates of Mineral Resources, that all material assumptions and technical parameters underpinning the estimates in the relevant market announcement continue to apply and have not materially changed.